

## TGF beta 1 Mouse monoclonal Ab

[References\(4\)](#) [Images\(5\)](#)

Cat.#: BF8012	Concn.: ~1mg/ml	Mol.Wt.: 33kDa
Size: 100ul	Source: Mouse	Clonality: Monoclonal

Application: WB 1:500-1:2000, IHC 1:50-1:200  
\*The optimal dilutions should be determined by the end user.

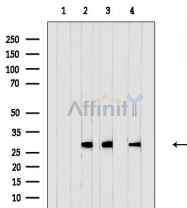
Reactivity: Human,Mouse,Rat

Storage: Mouse IgG in phosphate buffered saline (without Mg<sup>2+</sup> and Ca<sup>2+</sup>), pH 7.4, 150mM NaCl, 0.02% sodium azide and 50% glycerol. Store at -20 °C. Stable for 12 months from date of receipt.

Purification: Affinity-chromatography.

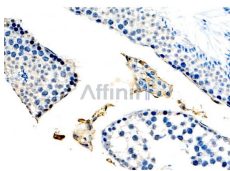
Immunogen: A synthesized peptide derived from human TGF beta1.

Uniprot: P01137



Western blot analysis of extracts from various samples, using TGF beta1 Mouse mAb.

Lane 1: Hela cells, blocked with antigen-specific peptides,  
Lane 2: Hela cells,  
Lane 3: Mouse kidney,  
Lane 4: Rat brain.



BF8012 at 1/100 staining Rat brain tissue by IHC-P. The sample was formaldehyde fixed and a heat mediated antigen retrieval step in citrate buffer was performed. The sample was then blocked and incubated with the primary Ab at 4°C overnight. An HRP conjugated anti-Mouse Ab was used as the secondary Ab.

**IMPORTANT:** For western blot, incubate membrane with diluted primary Ab in 5% w/v milk, 1X TBS, 0.1% Tween@20 at 4°C with gentle shaking, overnight.

For Research Use Only. Not for use in diagnostic and therapeutic procedures. Not for resale without express authorization.